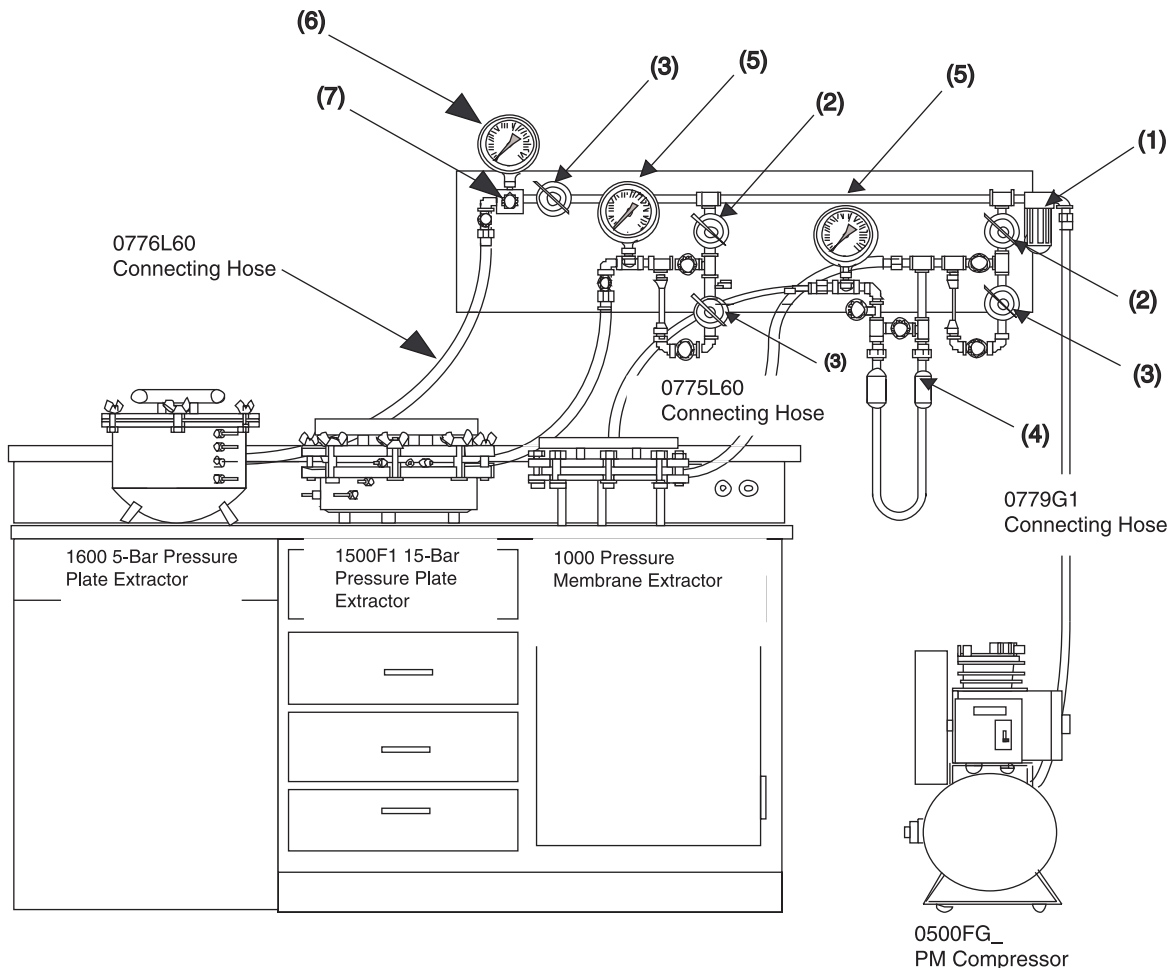


LAB 0123 EQUIPMENT LIST

0700CG123 Manifold with the 1000 Pressure Membrane Extractor and the 1500F1 and 1600 Pressure Plate Extractors

01/2003



The 0700CG123 Manifold Incorporates:

- (1) 0760G1 Air Filter
- (2) 0766P0250 Regulator, two each, 0-250 psi
- (3) 0766P0150 Regulator, three each, 0-150 psi
- (4) 0769G2 Mercury Differential Regulator
- (5) 0780P0300 Test Gauge, Two, 0-300 psi
- (6) 0780P0060 Test Gauge, 0-60 psi
- (7) 0765 Nullmatic Regulator, 0-60 psi

Plus all necessary valves and fittings

Laboratory Set-Up for the 1000 Pressure Membrane Extractor, 1500F1 15-Bar Extractor, and 1600 5-Bar Extractor. Both the 1500F1 and 1600 Extractors come with cells. Both will use either the 0675B01M1, Pressure Plate Cell, or 0675B03M1, 3-Bar Ceramic Plate Cell, operating independently with the 0500FG_ Compressor as a pressure source. NOTE: If you wish to use a gas tank as a pressure source, refer to our Lab 05123 Setup.

SOILMOISTURE EQUIPMENT CORP.

P.O. Box 30025, Santa Barbara, California 93130 USA
 Telephone: (805) 964-3525 - Fax: (805) 683-2189 - email: sales@soilmoisture.com
 Website: <http://www.soilmoisture.com>



Equipment Buying List with All Normal Accessories:

1	1000	Pressure Membrane Extractor
1	1080G1	PM Hinge
1	1090	Torque Wrench and Socket
2	0775L60	Connecting Hose, 60" Long
6	1093	Soil Sample Retaining Rings, per dozen
6	1041D12	Cut Cellulose Membrane Discs, per dozen
1	1500F1	15-Bar Pressure Plate Extractor (accepts 4 cells)
4	0675B15M1	15 Bar Pressure Plate Cells
1	1080G1	PM Hinge
1	0775L60	Connecting Hose, 60" Long
1	1600	5 Bar Pressure Plate Extractor
4	0675B01M1	1 Bar Pressure Plate Cells
4	0675B03M1	3 Bar Pressure Plate Cells
1	0776L60	Connecting Hose, 60" Long
1	0700CG123	Manifold
1	0779G1	Connecting Hose, Combination, 60" Long
1	0500FG_	PM Compressor

0899-Lab0123EqList.p65 (01/2003)

SOILMOISTURE EQUIPMENT CORP.

P.O. Box 30025, Santa Barbara, California 93130 USA

Telephone: (805) 964-3525 - Fax: (805) 683-2189 - email: sales@soilmoisture.com

Website: <http://www.soilmoisture.com>

